

# Utility & Industrial Safety Products



**PLASTICADE®**

Increase your visibility.



### Compact Sign Stands



### High Mount Sign Stands



### Tripods & Barrier Mount Sign Stands



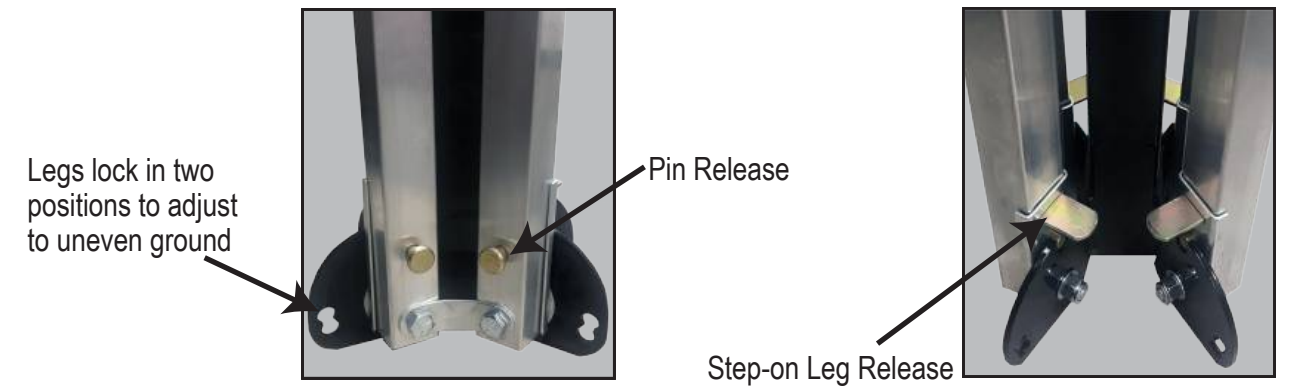
### Sign Stand Guide

Model #	SSRB800	SS300	SS300A	SS310	SS310A	SS340A	SS400	SS410A	SS420A	SS440	SS620A	SS621A	SS100	SS105	BC-12 & BC-15
Roll-Up Sign	Yes	Yes	Yes	Yes	Yes	Yes	Yes	Yes	No	Yes	Yes	No	No	No	Yes
Rigid Sign	No	No	No	No	No	No	No	No	Yes .080 Alum.	No	Yes 10 mm Cor.	Yes .080 Alum.	Yes 5/8" ply	Yes 5/8" ply	Yes
Main Material	Rubber	Powder Coated Steel	Alum.	Powder Coated Steel	Alum.	Alum.	Powder Coated Steel	Alum.	Alum.	Powder Coated Steel	Alum.	Alum.	Galv. Steel	Powder Coated Steel	Powder Coated Steel Clamp Alum. Mast

\* BC-12 & BC-15 not MASH Tested



## LEG RELEASE SYSTEM



Both Pin and Step-On Leg Releases are Standard on all Sign Stands (except for Tri-Pods & Barrier Clamp)

## STANDARD SIGN HOLDERS (see page 10 for additional options)



Universal Bracket For Roll-Up Signs



Zinc Plated

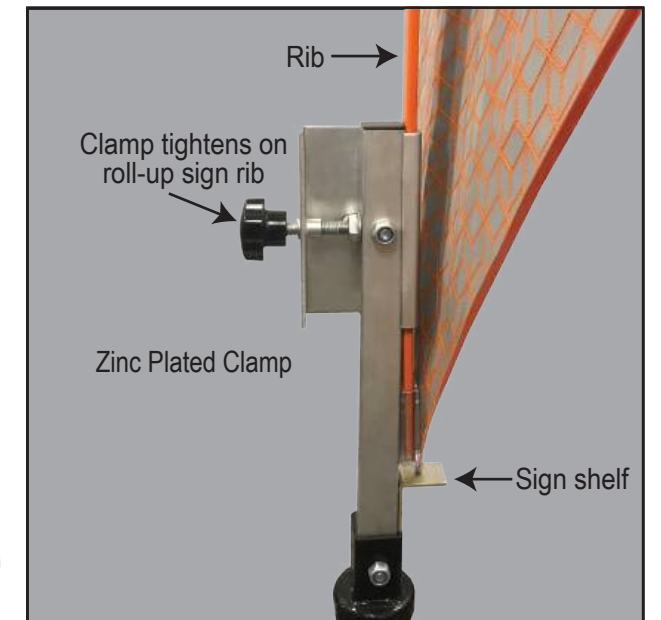


Brackets for Rigid Signs (U.S. Patent 10,546,515)



Zinc Plated

Universal Sign Clamp for Roll-Up Signs (patent pending)



## HEAVY DUTY SPRINGS

- Automotive grade springs
- designed to perform in extreme weather conditions without fatiguing or breaking
- E-coated for maximum rust and corrosion resistance
- Zinc plated nuts and bolts



 **MASH APPROVED**



**SPRINGLESS SIGN STAND**



**SINGLE SPRING SIGN STAND**



**COMPACT DOUBLE SPRING SIGN STAND**



**TALL DOUBLE SPRING SIGN STAND FOR ROLL-UP SIGNS**



**MEDIUM HEIGHT SPRINGLESS SIGN STAND FOR ROLL-UP SIGNS**



**HEAVY DUTY DOUBLE SPRING SIGN STAND FOR RIGID SIGNS**



**TRIPOD SIGN STANDS**



**INTREPID™ RUBBER BASE SIGN STAND FOR ROLL-UP SIGNS**

**SNAP N PACK™ ROLL-UP**

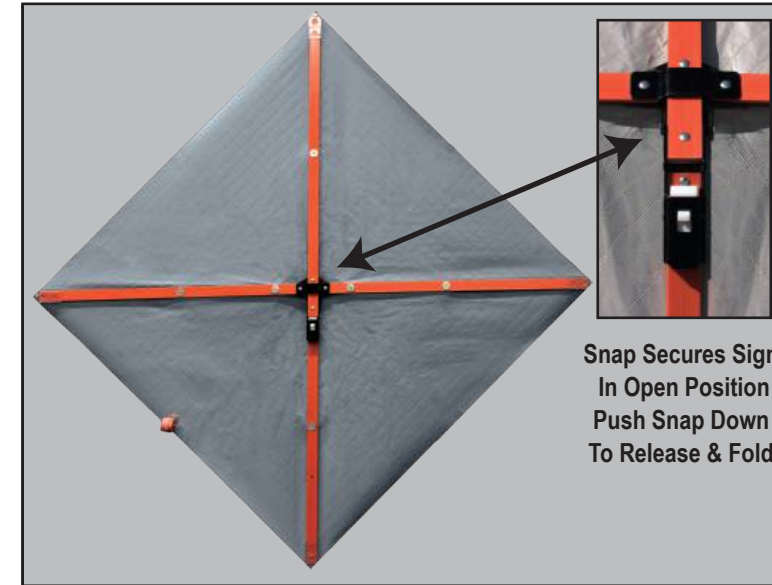
Sign folds up easily and snaps open!  
Deploy in seconds on a compact sign stand.

- Wear Resistant Ink!
  - ink won't transfer to sign where it doesn't belong
- Roll-up Signs 36" & 48"
- Reflective in orange, yellow, and pink
- Non Reflective, orange
- Fiberglass Cross Braces
  - 3/8" Vertical Brace with 3/16" horizontal brace
- Durable Polycarbonate Corner Pockets
- Standard and Custom Legends Available

**Perfect Product For First Responders!**



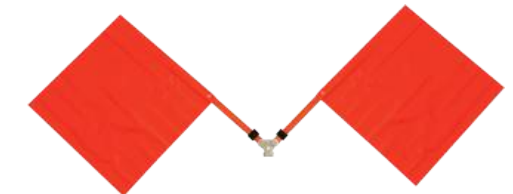
**Sign Slides Onto Universal Roll-Up Sign Bracket**



**Snap Secures Sign In Open Position  
Push Snap Down To Release & Fold**



**Carry Bags Available  
Holds Sign Stand with Snap N Pack Roll-Up Sign attached and ready to deploy**



**Optional Folding Flag Attachment**

- Riveted to vertical brace
- Folds up with the sign for storage

Use the Snap N Pack™ Roll-Up sign with our MASH Accepted Watchdog Compact Sign Stands

- Fits any stand with a universal roll-up sign bracket
- Recommended Sign Stands
  - SS310A for 36" x 36" Signs
  - SS340A for 48" x 48" Signs



# PVC TRAFFIC CONES

High visibility PVC injection molded cones  
 - 36" in 10 lbs. and 12 lbs. fluorescent orange  
 - 28" in 7 lbs. and 10 lbs. fluorescent orange and 7 lbs. lime green  
 - 18" in 3 lbs. fluorescent orange and lime green

Recycled rubber cone weights available for 28" & 36" cones  
 - 5 lbs. and 7 lbs.

Fluorescent orange or lime green color is molded throughout  
 - resists fading  
 - provides high visibility protection

One piece design - cone is permanently molded to black base  
 - won't separate when hit by a vehicle  
 - rubber base designed to grip the road

36" & 28" cones have hand-grip at top

Durable and reboundable

Stable on the road, won't be blown over

Stackable for storage, no sticking when removed

36" & 28" cones have recessed areas that accept high intensity white collars  
 - 3M™ collars have excellent wide angle retroreflectivity

Stenciling available

MASH Accepted, Meets MUTCD Standards



Cone Weights Available  
5 lbs. and 7 lbs.

# TELESCOPING CONE BARS

- Two sizes  
 - Expands from 4' to 7'  
 available in reflective orange on white and reflective yellow on black  
 - Expands 5.5' to 10' in reflective orange on white  
 - Quick installation to provide high visibility barrier  
 - Portable and versatile, lightweight, 2 lbs.



# GEMSTONE™ VERTICAL PANEL

Oversized handle with comfort grip - can be picked up easily, even with light attached

Thick Flange! Holds onto base  
 - increased rigidity from larger ribbing  
 - eliminates splitting and cracking

Recessed panel protects reflective sheeting - 36"H x 8"W

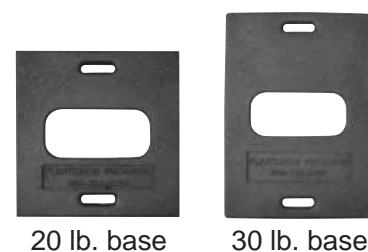
Flashing light mounting receptacle

Solid recycled rubber base in two sizes

Available in orange, white, and black

Dimensions: 44.5"H x 14.75"W Weight: 4 lbs.

MASH Accepted WZ-300, Meets MUTCD Standards



20 lb. base 30 lb. base

**New Stronger Flange!**  
Stands Up To Extreme Heat  
and Intensive Use



The handle is easy to grab, even with light attached

# GRIP TOP™ DELINEATOR

42" H (47.25" with handle)

Large, strong handle is easy to grip  
 - quick placement and pick-up

Post diameter - 4"

Orange polyethylene

Cone bar slips over top

Recessed areas accept two bands of sheeting  
 - protects retroreflective sheeting from rips and scratches

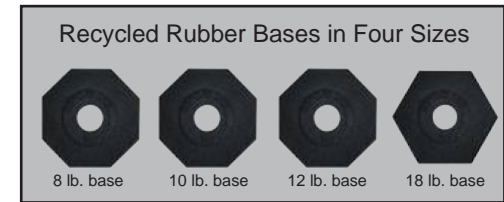
Bright orange for visibility

Flange on bottom grabs base for tight fit

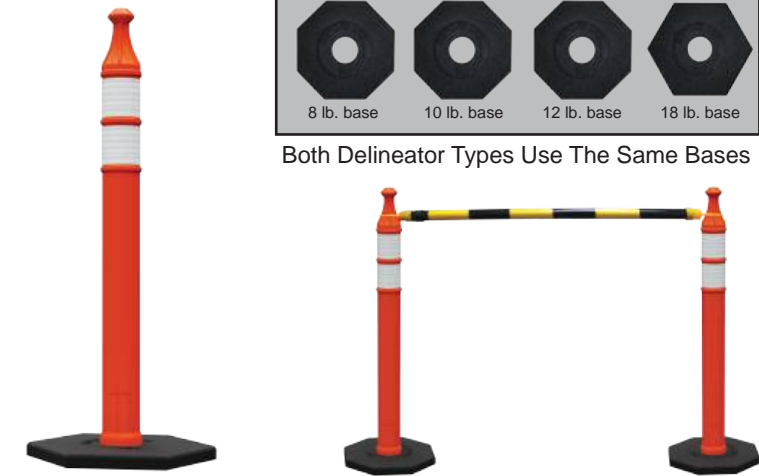
Recycled rubber bases, 8, 10, 12, and 18 lbs.

Weight: 1.6 lbs.

MASH Accepted, Meets MUTCD Standards



Both Delineator Types Use The Same Bases



Perfect for Cone Bars!

# WATCHTOWER™ DELINEATOR

Watchtower handle has ergonomic, comfort grip  
 - dome cap provides strength and durability  
 - easy placement and pick-up

Two sizes

- 42" (47"H with handle)
- 28" (33.6"H with handle)

Post diameter - 4"

Recessed areas accept two bands of sheeting  
 - protects retroreflective sheeting from rips and scratches

Flange on bottom grabs base for tight fit

Durable polyethylene  
 - bright orange for visibility

Recycled rubber bases, 8, 10, 12, and 18 lbs.

Weight: 42"H - 1.7 lbs., 28"H - 1.25 lbs.

MASH Accepted, Meets MUTCD Standards



Great for Caution Tape



Easy Grip Handle

# WATCHTOWER™ STACKER CONE

42" tall - compact nesting design

Strong, ergonomic handle  
 - speeds placement on job  
 - fits two hands to make lifting with base easier  
 - string caution tape through handles

Recessed area protects sheeting

Use with 10, 16, or 30 lb. recycled rubber base

Accepts same bases as our Navicade™ delineator  
 - reduces your base inventory

Customize with your company name or logo

Available in orange and yellow

Dimensions: 47.5"H x 11"W  
 Weight: 2.25 lbs.

MASH Accepted, Meets MUTCD Standards

Made in the U.S.A.

Ergonomic handle makes placement of cones easy, even with heavy base



String caution tape through handles



# STOP/SLOW PADDLES, POLES & SIGNS

## ELITE PVC FLAGGER POLE

Pieces Slide Together And Are Secured With Spring Loaded Button

Orange PVC, 1.6" dia. hollow tube, 0.15" thick wall

Two lengths, 72"L and 84"L  
- choose a two or three piece pole

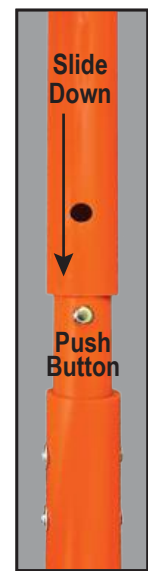
Top segment has 12"L handle and holds the sign

Spring loaded button  
- makes it easy to change from handle to pole to storage

Rounded plastic tip at pole bottom, allows for easy pole turns

Comes with hardware to attach sign, signs sold separately

Meets MUTCD Standards



Spring Loaded Button connects the segments



Use top section as paddle 12" L Handle

Assembled Pole 72"L or 84"L



3 Segment Pole



2 Segment Pole

## STOP/SLOW Signs Only



Side A



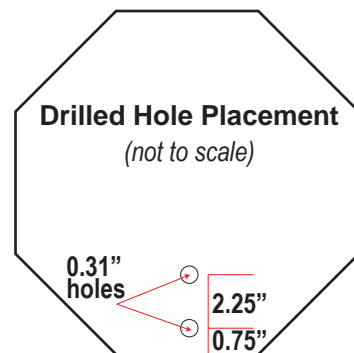
Side B



Side A



Side B

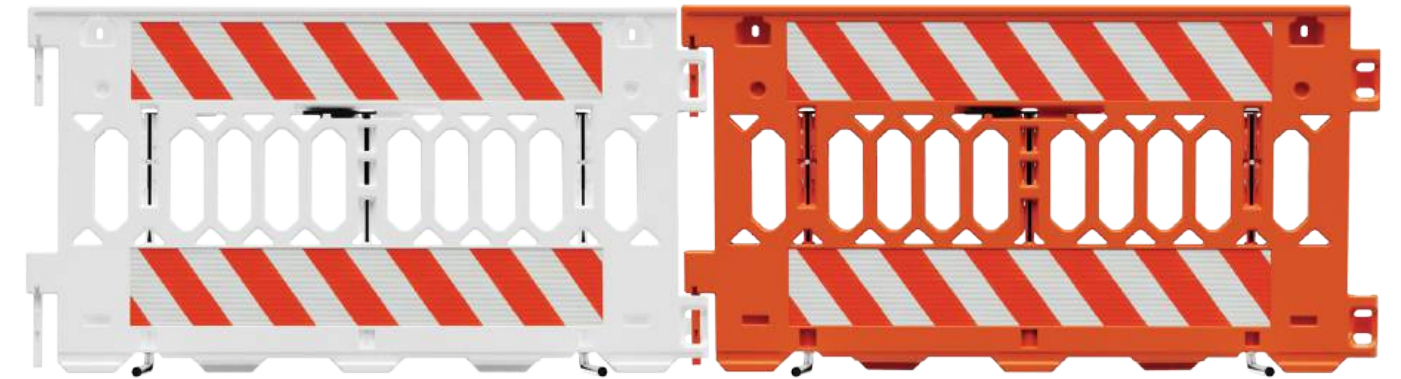


# ADA PATHCADE™ BARRICADE

**ADA COMPLIANT & MASH APPROVED**

Multi-purpose Barricade System

- Crowd Control System
- Manhole Guard
- ADA Pedestrian Pathway System
- Longitudinal Channelizing Device



Multi-functional barricade system meets ADA requirements, 72"L x 38"H x 3"D  
- continuously detectable edge at barricade top and bottom

Exclusive tripod leg system, no sandbags needed when using all 3 feet

- anti-trip foot on one side
- two larger feet on other side
- use only larger feet with sandbags for ADA Compliance

Easy handle turn deploys barricade feet!

- unique soft grip handle system, quick turn moves feet out or back in

Stack 20% more

- nesting system allows for 19 units to be stacked on pallet
- lowers transportation costs
- stacking lugs keep stacked units from shifting

Shape to any layout, units pivot 120°

- 3 units in triangle layout for manhole guard

Robust dual connectors create easy to use linking system

Smooth, comfortable guardrail

- rounded edge on top of panel

Four recessed sheeting areas, two on each side of panel, 8" x 50" ea.

Light shelves hold standard barricade lights, 2 per section

Holes for attaching signage to panel

Available in orange or white, with or without retroreflective sheeting

MASH Accepted, WZ-428, Meets MUTCD Standards

Made in the U.S.A.



Anti-Trip Foot Tripod Leg System

Handle turn Deploys Feet



Add Signs for Crowd Control



Create ADA Compliant Pedestrian Pathway



Use Three Units To Create Manhole Guard

## SAFEKERB SUPAGRIP RAIMP

- Ramp adapts to curb heights from 2.5" to 6"
- Withstands loads up to 772 lbs.
- Flexible black edge reduces unwanted movement
- High visibility, anti-slip, textured surface
- Raised sides prevent vehicle run off
- Molded plastic won't rust
- Stacks compactly for transport and storage
- Bolt to road and walkway surface for added stability
- Available in yellow
- Overall Dimensions: 50.2"L x 29.9"W, 22 lbs.



## SAFEGATE MANHOLE GUARD

- Nonconductive (dielectric), no metal used
- Great for protecting any area requiring temporary restriction of access
- Hinged clips make it easy to configure sections into rectangles of various sizes
- Locking clamp connects straight sections
- Folds up easily for storage and sets up quickly
- Carry handles for transport
- Longer life than metal, replacement sections available
- Available in yellow
- Dimensions for single section: 39.4"H x 29.5"W Weight: 4.4 lbs.



**Nonconductive  
(no metal used)**



Optional retroreflective sheeting increases visibility

## TRENCH COVERS

### Trench Covers - 35" & 27"

- Two sizes
  - designed to cover trenches up to 35" and 27"
- Takes the weight of a vehicle up to 4,410 lbs
- Anti-slip surface
- Deters metal thieves
- Beveled edge prevents tripping
- Molded from a single piece of fiberglass composite
  - underside has ribbed framework for added strength
- Secure with 4 bolts
- Available in yellow
- 35" Trench Cover Dimensions:
  - 63"L x 47.2"W x 1.18"H, 73 lbs.
- 27" Trench Cover Dimensions:
  - 47.2"L x 31.5"W x 0.93"H, 26.5 lbs.

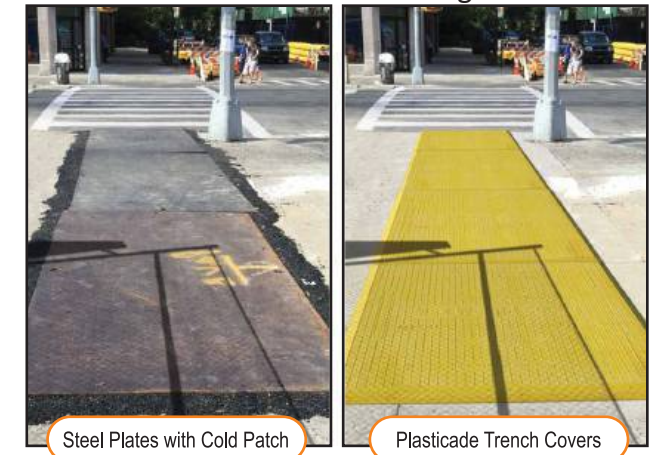
### High Visibility, Anti-slip Surface



### Pedestrian Trench Cover

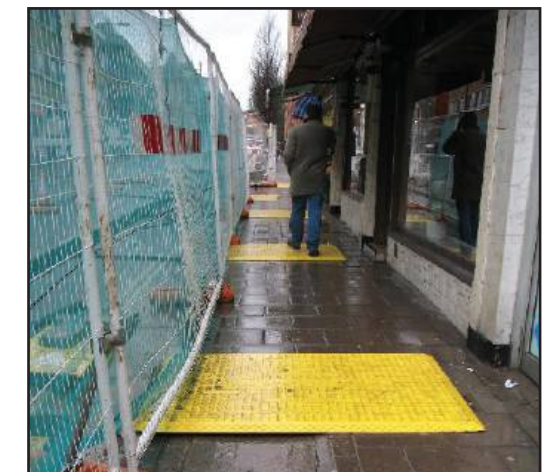
- Ideal for Sidewalk Construction
- For Pedestrians Only - takes up to 553 lbs.
- Covers trenches up to 27.5"
- Anti-slip surface
- Smooth rubber edge greatly reduces tripping hazard
- Resists sliding, no need to bolt down
  - flexible material which grips the surface underneath
- Available in yellow
- Overall Dimensions: 44.3"L x 44.3"W x 0.7"H, 62 lbs.

Lighter than steel,  
stronger than wood



Steel Plates with Cold Patch

Plasticade Trench Covers



# RUBBER BASE SIGN STANDS

Durable recycled rubber bases  
 - three sizes: 30 lbs., 60 lbs., Stack for 90 lb. base  
 - resistant to weather, oil, salt, moisture, & UV light  
 - will not warp, chip, or crack



Withstands strong winds without tipping over

Molded-in Hand-grips make bases easy to pick up

Optional wheels makes moving signs even easier  
 - heavy duty, non-scratch plastic wheels

Made in the USA

Kit available with plastic square Power Post™ and hardware









**OPTIONAL WHEELS**  
 comes with two double wheel assemblies installed



# SIGN STANDS - SAFETY SIGNAGE

## ① Choose a Sign Stand

- 6 Sizes
- 3 Colors: white, yellow, or orange

 <p><b>Barricades</b>                  Hold signs 24"W x 12"H on top panel                  4 Types:                  Plasticade®                  Fibercade™                  Econocade™                  Combocade™</p>	 <p><b>Squarecade™ 45</b>                  Holds signs 24"W x 24"H                  Dimensions: 45"H x 25"W                  18 lbs.</p>	 <p><b>Squarecade™ 36</b>                  Holds signs 24"W x 24"H                  Dimensions: 36"H x 25"W                  17 lbs.</p>
 <p><b>Narrowcade®</b>                  Holds signs 12"W x 24"H                  Dimensions: 45"H x 13"W                  11 lbs.</p>	 <p><b>Minicade®</b>                  Holds signs 12"W x 24"H                  Dimensions: 36"H x 13"W                  10 lbs.</p>	 <p><b>Signicade®</b>                  Holds signs 24"W x 36"H                  Dimensions: 45"H x 25"W                  18 lbs.</p>

## ② Choose a Sign Legend

- Over 100 Standard Designs
- Custom Design Your Own Sign

## ③ Plasticade will Professionally Apply the Legend to the Sign Stand

- Hassle Free
- Guaranteed Application



# FLAGGER STATION & WORK AREA LIGHTING

8 foot light elevation

Collapsible aluminum extension mast  
- cam lock adjustments with retractable cable

Battery rated for 500+ charge cycles  
- push to test voltage meter

DC Power Port  
- operate unit with external 12 VDC power  
- run other DC powered electrical devices

Charge with clamp style jumper cables  
- can jump start vehicle

Lamp heads are independently, directionally adjustable

Yellow LED flasher on unit for added safety

Legs stable on uneven ground, retract for storage

Weatherproof case

Lifetime warranty on light heads

One year replacement warranty on battery and charger

Weight: 44 lbs. Storage Dimensions: 26"H x 17.5"W x 8"D



Sets Up  
In Seconds



Dual LED Light Head  
4000 Total Lumens (2,000 each light head)  
24 Watts, 2 amps, for the two heads  
Full Charge Run Time:  
• 14+ hrs. with both light heads on  
• 25+ hrs. with one light head on

**WARNING**  
This product contains a sealed lead acid battery which can expose you to chemicals including Lead and Sulfuric Acid, which are known to the State of California to cause cancer and birth defects or other reproductive harm.  
For more information go to [www.P65Warnings.ca.gov](http://www.P65Warnings.ca.gov)



115 VAC power and DC to DC power cords included



Charge DC Powered Electrical Devices (DC computer adapter not included)

# WHEEL CHOCKS

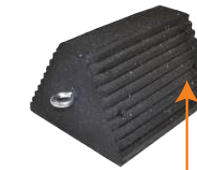
Made of 100% post-consumer recycled rubber

Will not compress, warp, chip, or crack

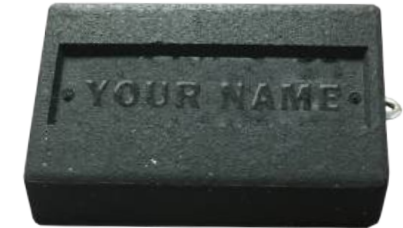
UV, oil, and weather resistant

Can be customized

- your name or logo embossed in the chock  
- paint for greater visibility and easy identification



Ridges in chock grip the tire aiding traction on select chock models



Your Name or Logo Embossed  
200 minimum order quantity

Automotive & Industrial Chocks Come Standard With Eye bolt



5.25"W x 6.75"D x 4.5"H  
3.5 lbs.



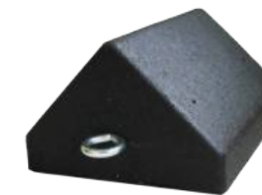
5"W x 9"D x 6"H  
6.5 lbs.



10"W x 8"D x 6"H  
8 lbs.



Painted Chocks for Greater Visibility & Quick Identification  
Standard Colors:  
Orange, Red, Blue, Yellow, White, & Green  
200 minimum order quantity required



Metal Hairpin Option  
painted steel 4" x 1.75"

Metal Pole Step Handle Option  
7"L galvanized steel



9.75"W x 7.75"D x 5"H  
10 lbs.



10"W x 8"D x 6"H  
11.5 lbs.



6.75"W x 9.25"D x 8"H  
12 lbs.



8.75"W x 8.5"D x 7"H  
15 lbs.



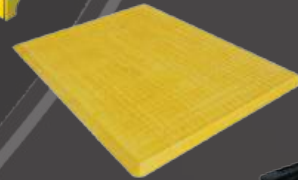
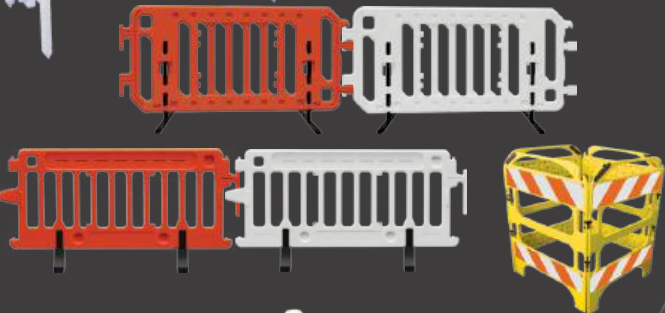


**PLASTICADE®**

Phone: (800) 772-0355

Info@Plasticade.com

Plasticade.com



Distributed By: